



Hereford Road, London, E3

BUTLER & STAG



Nestled within a sought-after gated development in the heart of Bow, this bright and spacious one-bedroom apartment offers modern living in a secure and tranquil environment. With a long lease in place, this property is perfect for first-time buyers, young professionals, or investors seeking a solid opportunity in a thriving area.



Leasehold

- One Bed Apartment
- Open Plan Living
- Close to Bow Road Station
- EWS1 Compliant
- Gated Development
- Lift Access
- Close To Victoria Park
- Chain Free

Key Features:

Generously Sized Bedroom: A well-proportioned double bedroom with ample space for storage.

Open-Plan Living Area: A spacious living room seamlessly flowing into the kitchen, ideal for entertaining or relaxing.

Modern Kitchen: Fully equipped with contemporary appliances, sleek countertops, and plenty of storage.

Stylish Bathroom: A clean, modern bathroom suite with good-quality fittings.

Gated Development: Secure entry and a sense of community, offering peace of mind.

Excellent Natural Light: Large windows throughout flood the apartment with light.

Long Lease: Providing long-term security and peace of mind for the new owner.

Prime Location: Situated in Bow, with excellent transport links including Bow Road (District and Hammersmith & City Lines) and Bow Church DLR, connecting you to Canary Wharf, the City, and beyond.

The apartment is conveniently located near vibrant local amenities, green spaces such as Victoria Park, and popular spots like Roman Road Market.

This is a rare opportunity to secure a one-bedroom apartment in a fantastic location with long-term potential.





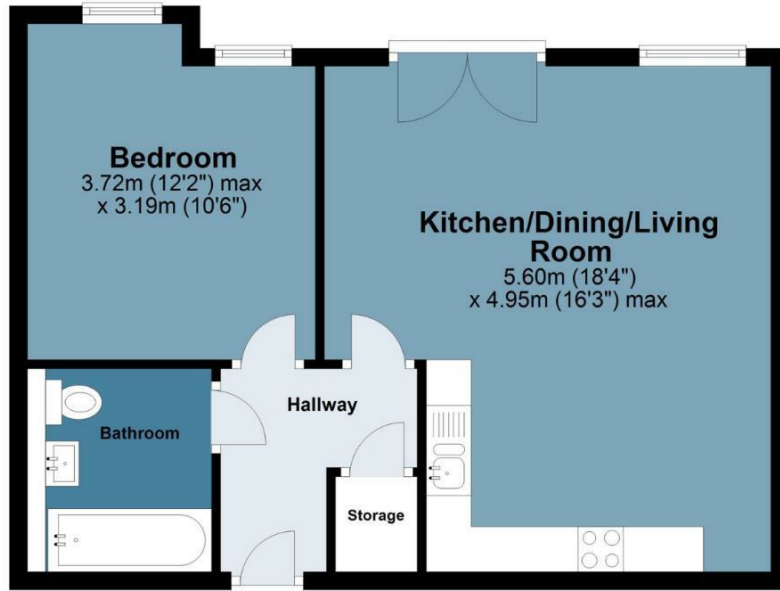
Rosegate House

Approx. Gross Internal Area 47 sq. metres 506.4 sq. feet)

BUTLER & STAG

Second Floor

Approx. 47.0 sq. metres (506.4 sq. feet)



Measurements are approximate and for illustration purposes only. While we do not doubt the accuracy and completeness, we advise you conduct a careful independent assessment of the property to determine monetary value
© @modephotouk www.modephoto.co.uk

BUTLER & STAG

☎ 020 8102 1236

🏠 508 Roman Road, Bow, London, E3 5LU

✉ bow@butlerandstag.com

IMPORTANT NOTICE - These particulars have been prepared in good faith and they are not intended to constitute part of an offer or contract. We have not performed a structural survey on this property and the services, appliances and specific fittings have not been tested. All photographs, measurements, floor plans and distances referred to are given as a guide and should not be relied upon.

www.butlerandstag.uk